

Distributors

C 112 Series



Distribution boxes ... Page 29
4-, 6- and 8-way



Y-Distributor 1x pin / 2x sockets ... Page 30
Y-Distributor 1x socket / 2x pins

Description

Ready to use M12-Distribution boxes with 4-, 6- and 8-way distribution.

M12-Y-Distributor for twofold distribution.
1x pin / 2x sockets or 1x socket / 2x pins.



General characteristics	Standard	Y-Distributor	Distribution Box
Contacts		3 / 4 / 5	5

Electrical characteristics

Contact resistance	IEC 60 512-2, test 2 a	≤ 10 mΩ	≤ 5 mΩ
Current carrying capacity	IEC 60 512-3, test 5 b	4 A / 40°C	2 A / 40°C
Rated voltage	IEC 60 664-1 ²⁾	30 V AC/DC	32 V
Rated impulse voltage	IEC 60 664-1 ²⁾	1,44 kV	–
Insulation resistance	IEC 60 512-2, test 3 a	> 10 ⁹ Ω	> 10 ⁹ Ω
Pollution degree	IEC 60 664-1 ²⁾	3 ¹⁾	2
Overvoltage category	IEC 60 664-1 ²⁾	III	–
Material group	IEC 60 664-1 ²⁾	I	–
Test voltage	IEC 60 664-1 ²⁾	0,78 kVeff	1,0 kVeff

Climatic characteristics

Climatic category	IEC 60 068-1	25 / 85 / 21	–
Temperature range	IEC 60 512-6, test 11 i+j	–25°C - +85°C –13°F - +185°F	–20°C - +90°C –4°F - +194°F

Materials

Contact insert		TPU	PBT
Contact plating		Au	Au
Body		TPU	–
Housing		–	PBT
Knurled screw / knurled nut		CuZn nickel plated	–
O-Ring		Viton	–

Mechanical characteristics

Protection class	IEC 60 529	IP 67 when properly mated	IP 67 when properly mated
Mechanical operation	IEC 60 512-5, test 9 a (without corrosion)	≥ 100 mating cycles	≥ 100 mating cycles
Insertion force	IEC 60 512-7, test 13 b	≤ 20 N	≤ 20 N
Withdrawal force	IEC 60 512-7, test 13 b	≤ 20 N	≤ 20 N

Other technical characteristics

Type of termination		crimp (overmolded)	solder
Wire size		0,34 mm ² (AWG 22)	–
Flammability		UL 94 HB	UL 94 V-0
Locking		Screw coupling	Screw coupling

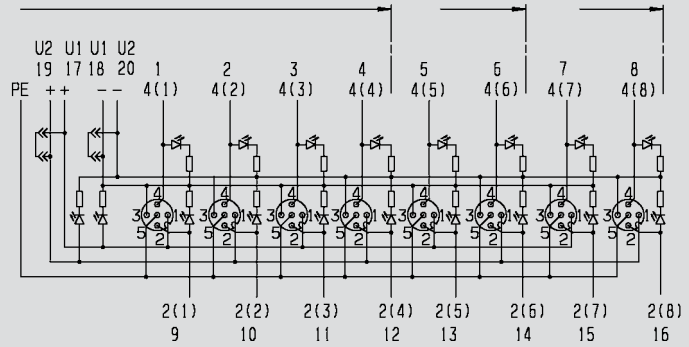
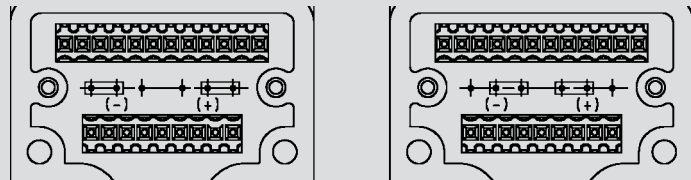
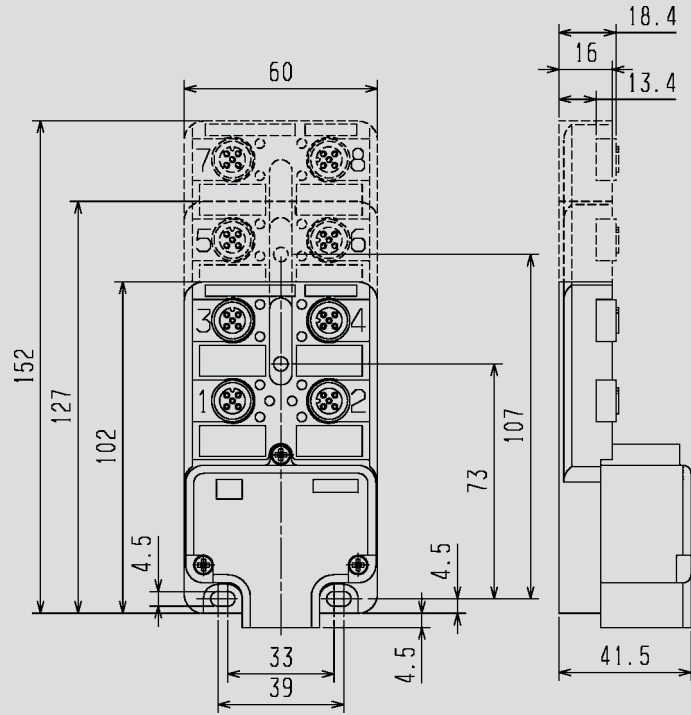
¹⁾ 5 contact version in mated position only. Unmated for maintenance purposes only.

²⁾ IEC 60664-1 corresponds to DIN VDE 0110



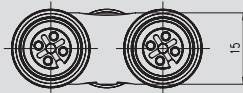
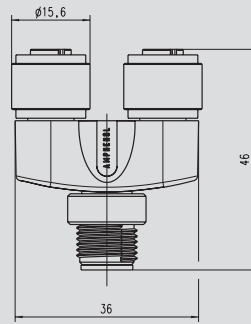
Distribution boxes
4-, 6- and 8-way

Contacts	Distribution	Order No.
5	4-way	C112 50U004 000 10
	6-way	C112 50U006 000 10
	8-way	C112 50U008 000 10





Y-Distributor
1x pin / 2x sockets



Contacts	Order No.
3	C112 40A003 000 10
4	C112 40A004 000 10
5	C112 40A005 000 10

Other codings upon request.

Y-Distributor
1x socket / 2x pins

Contacts	Order No.
3	C112 40B003 000 10
4	C112 40B004 000 10
5	C112 40B005 000 10

Other codings upon request.